



# ADOLESCENTS NEEDED

Are you a parent of a 13-17-year old? Has your child been experiencing sad or irritable moods? Has he/she lost interest in his/her activities?

Participate in paid research of the biological link between stress and depression in teenagers!!

*Eligible participants will earn **\$20 per hour** at Stanford University.*

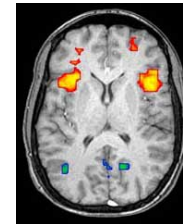
**Your child will:** participate in interviews and computer activities, receive a finger prick and have scans taken of their brain.

**Requirements:** Must have a son or daughter ages 13-17 years who has recently been experiencing sad moods, irritability or has had a lack of interest in his/her activities, be a U.S. citizen or green card holder, read and speak English fluently, have no plans to leave the Bay Area in the next 6 months.

\*\*\*All information is kept strictly confidential\*\*\*

**FOR MORE INFORMATION CONTACT:** [snaplab@stanford.edu](mailto:snaplab@stanford.edu) or  
(650) 721-5077

*For general information about participant rights, call 1-866-680-2906.*



Participants will receive a picture of their brain as a souvenir!

Neurobiology of Adolescent  
Depression and Stress Study

[snaplab@stanford.edu](mailto:snaplab@stanford.edu)

(650) 721-5077

Neurobiology of Adolescent  
Depression and Stress Study

[snaplab@stanford.edu](mailto:snaplab@stanford.edu)

(650) 721-5077

Neurobiology of Adolescent  
Depression and Stress Study

[snaplab@stanford.edu](mailto:snaplab@stanford.edu)

(650) 721-5077

Neurobiology of Adolescent  
Depression and Stress Study

[snaplab@stanford.edu](mailto:snaplab@stanford.edu)

(650) 721-5077

Neurobiology of Adolescent  
Depression and Stress Study

[snaplab@stanford.edu](mailto:snaplab@stanford.edu)

(650) 721-5077

Neurobiology of Adolescent  
Depression and Stress Study

[snaplab@stanford.edu](mailto:snaplab@stanford.edu)

(650) 721-5077

Neurobiology of Adolescent  
Depression and Stress Study

[snaplab@stanford.edu](mailto:snaplab@stanford.edu)

(650) 721-5077

Neurobiology of Adolescent  
Depression and Stress Study

[snaplab@stanford.edu](mailto:snaplab@stanford.edu)

(650) 721-5077

Neurobiology of Adolescent  
Depression and Stress Study

[snaplab@stanford.edu](mailto:snaplab@stanford.edu)

(650) 721-5077

Neurobiology of Adolescent  
Depression and Stress Study

[snaplab@stanford.edu](mailto:snaplab@stanford.edu)

(650) 721-5077

Neurobiology of Adolescent  
Depression and Stress Study

[snaplab@stanford.edu](mailto:snaplab@stanford.edu)

(650) 721-5077

Neurobiology of Adolescent  
Depression and Stress Study

[snaplab@stanford.edu](mailto:snaplab@stanford.edu)

(650) 721-5077